

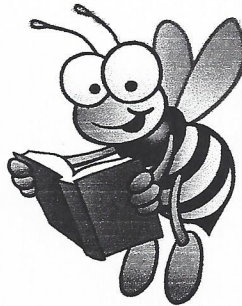
CLAY COUNTY HONEYBEE ASSOCIATION
TYPICAL CALENDAR OF EVENTS
AND
PLANT BLOOMING DATES

Prepared by Brian Carolan and Ed Gaynes

****Remember that beekeeping is an art form and not a science, we all manage our bees differently.****

"If you ask 50 Beekeepers how to do something you will get 51 answers"

(Ancient beekeeping proverb)



<p style="text-align: center;"><u>January</u></p> <p>Monitor hive strength Feed if needed Medicate Reduce entrances Prep for orange blossom: Supers & 1:1 feed Order queens or swarms</p> <p>Plants to watch: Maple Notes:</p>	<p style="text-align: center;"><u>February</u></p> <p>Finish all treatments Feed if needed Prep supers</p> <p>Plants to watch: Maple and willow Notes:</p>
<p style="text-align: center;"><u>March</u></p> <p>Watch for swarming Make splits Added supers Start prepping extracting equipment</p> <p>Plants to watch: Holly Notes:</p>	<p style="text-align: center;"><u>April</u></p> <p>Monitor hives Super Make splits Super if needed-check once a week</p> <p>Plants to watch: Tulip poplar, blackberry, and gall berry Notes:</p>
<p style="text-align: center;"><u>May</u></p> <p>Super if needed-check once a week Watch hive strength Let them work!</p> <p>Plants to watch: Gall berry and palmetto Notes:</p>	<p style="text-align: center;"><u>June</u></p> <p>Super if needed Watch for end of main honey flow Monitor hive strength Rob & extract</p> <p>Plants to watch: End of palmetto Notes:</p>

<p style="text-align: center;"><u>July</u></p> <p style="text-align: center;">Render wax Clean extracting equipment Too Hot!-Disturb bees as little as possible Watch for robbing</p> <p>Plants to watch: None-dearth Notes:</p>	<p style="text-align: center;"><u>August</u></p> <p style="text-align: center;">Too Hot!-Disturb bees as little as possible They will be mean Watch for robbing</p> <p>Plants to watch: None-dearth Notes:</p>
<p style="text-align: center;"><u>September</u></p> <p style="text-align: center;">Monitor supers for fall flows Watch honey stores in weaker hives Re-queen</p> <p>Plants to watch: Astor, goldenrod, and Spanish needle Notes:</p>	<p style="text-align: center;"><u>October</u></p> <p style="text-align: center;">Take off last of supers Medicate Feed if needed Watch for robbing</p> <p>Plants to watch: None-dearth Notes:</p>
<p style="text-align: center;"><u>November</u></p> <p style="text-align: center;">Remove medication Feed if needed Watch for robbing</p> <p>Plants to watch: None-dearth Notes:</p>	<p style="text-align: center;"><u>December</u></p> <p style="text-align: center;">Feed 1:1 syrup if going to orange Monitor hives for feed Clean all wooden ware for next year Order new supplies Order queens or swarms</p> <p>Plants to watch: Early maple Notes:</p>